



transforming  green ideas...



# About QorX



Qorx Energy is India's largest integrated solar company that is driven by the singular vision transforming GREEN ideas. Since, 2014 we operates in three different segments manufacturing of solar PV modules, EPC services for solar power projects and creating innovative solar products for both rural and urban market

Qorx Energy has a strong EPC team executing many solar power projects of multiple sizes across India. We are at the forth front of the growing solar solution space enabling people to switch for captive solar power to lighting their premises



## Why Qorx

Qorx Energy Is the place, where start from plug to source can power by solar energy.



In-house production

Market Leadership



Reliable and scalable

EPC and O&M Expects



Customer Support



Strong Management



## Vision

Committed to enabling solar each corner of the earth and bringing the power to people in most efficient and cost effective way possible



## Mission

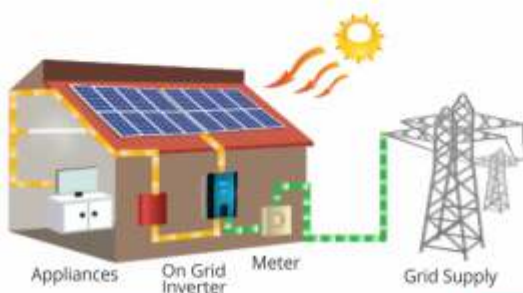
Enhance existing technology, products and solutions to explore new market segments in India and across the world.

# Solar Power Solution



## Solar On Grid System

A solar on grid system is electricity generating solar PV system that is connected to utility grid. System consists of solar panels, one or several inverters, a net metering system and grid connection equipment. Power range is from residential, commercial rooftop systems to large utility scale solar power solutions.

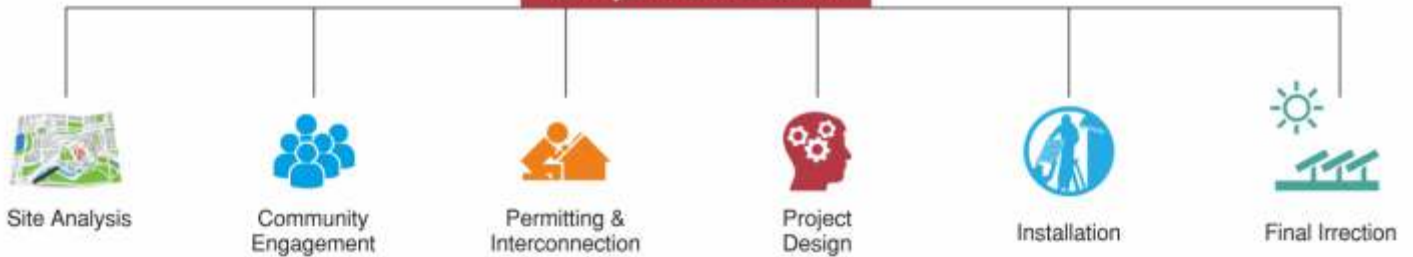


## Solar OFF Grid System

A Solar Off grid system are independent power station capable of powering a wide range of application with dependable and reliable electricity. These systems will generally have a battery bank in order to store the electricity for use when needed.



### Project Execution



### APPLICATIONS

- Domestic
- Industries
- Hospitals
- Farmhouse
- Institutes
- Petrol pumps
- Mobile tower

# Solar Operation & Maintenance

The importance of O&M is often overlooked by many developers. Considering the fact that the plant has to generate returns over a period of 25 years, a good O&M contractor, a good monitoring system and above all, a very good O&M process is very critical for the success of the plant.

As part of our Total Life Cycle Management service, Qorx Energy provides & handles complete Operation & Maintenance of Solar PV power plants. The services include both knowledge based services as well as on-site maintenance. We also translate our deep understanding of the Solar PV industry into O&M consulting services for our clients in addition to also providing them with EPC assistance for O&M equipment. We already have an experience of O&M of power plants upto 5 MW power supply.



## SCOPE OF SERVICE



### OPERATE :

Use facility the facility in accordance with safety, occupational health and environment regulations.



### VERIFY AND REPORT :

Record all information on electricity generation, breakdown, power loss.



### MONITOR AND SUPERVISOR :

Use SCADA & RMS to provide historical data, performance alerts, and web based monitoring



### PREVENTIVE MAINTENANCE :

Maintain A Project With Inspection, Testing, Cleaning, and Replacement Of A Part For Better Performance.



### INFRASTRUCTURE & TRAINING :

Provide onsite testing instruments for necessary O&M and a provide power evacuation to client's staff by our expertise.



### MANPOWER & MAINTAINS SCHEDULE :

We are always alerts to provide manpower for regular check up of plants.

# Solar Water Pumping System

A solar pump draws power from solar panels to operate a single and three phase motor pumps. The system consist a numbers of solar panels connected in series- parallel connection to sufficient power to operate submersible, monoblock and openwell pumps range from 1 to 100 HP. A system is for to continuous and high water discharge from the pump set.

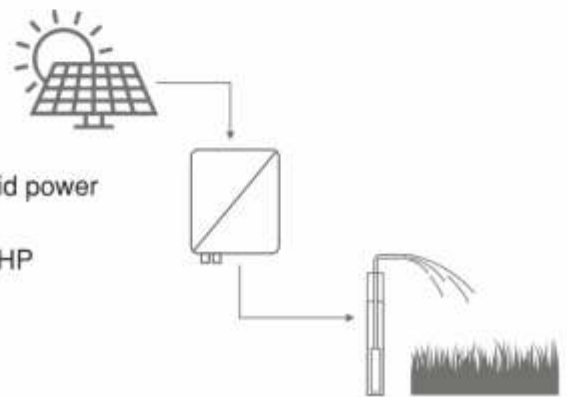


## APPLICATION OF SOLAR PUMP

- Ideal for remote area
- Drip irrigation & sprinkler for farms
- Pond aeration & livestock watering
- Water purification systems
- Industrial applications
- Leisure Applications
- Schools, hospitals, institutes, dairy farms.
- Filtration plants

## ADVANTAGES

- Economical friendly
- No fuel required
- Independence from grid power & diesel generator
- Available 1 Hp to 100 HP
- Automatic operations
- Long life



# SOLAR LED STREET LIGHT



## Solar LED Street Light

Model	LED Walt	Battery	Module	Pole
QEL9	9W	26 AH	40W	5 mtr.
QEL12	12W	26 AH	40W	5 mtr.
QEL18	18W	65 AH	75W	6 mtr.
QEL24	24W	100 AH	120W	6 mtr.

# Solar Pump Controller



## SPECIAL ATTRACTION OF OUR SOLAR PUMP CONTROLLER :

- Ip65 Enclosure as per IEC/IS 60529:2001 (Standard).
- Inverter with built in MPPT Function to maximize the Solar input power.

## LCD DISPLAY

- Dc volt
- Motor Ampere
- Motor Frequency
- Motor Kw
- Cumulative PV Panel Power In KWH
- Motor status-run or stop



## SCOPE FOR WATER LEVEL SENSOR ATTACHMENT.

- Scope for flow sensor attachment.
- Dual mode input supply (Solar+Grid).
- Soft Starting of pump which controls initial inrush current.
- Multiple built in protection like dry run over voltage, under voltage, overload, reverse polarity, short circuit, and phase imbalance.
- Solar input supply protection with DP/DC MCB.

## ADD-ON FEATURES:

- Remote Monitoring Facility.
- Inbuilt / External Battery Charger 12v, 10amp With No Extra Arrangement Of Solar Panel.
- Display battery status (charging/discharging/full/low).
- Inbuilt / External Solar inverter to run small home lighting system. ( ex. 1fan and 2 led bulb).

## TECHNICAL DATA :

Model	Motor Power	Solar Power	Max Input Voltage	Mpvt Voltage	Output Voltage	Output Current	Output Frequency
QE-1	1hp,1/3phase, 230vac	1000w	500Vdc	300-360Vdc	0-230 Vac	3.5 Amp	0-50Hz
QE-2	2hp,1/3phase, 230vac	2000w				6 Amp	
QE-3	3hp,1/3phase, 230vac	3000w				8.5 Amp	
QE10	1hp, 3phase, 415vac	1000w	800Vdc	550-650Vdc	0-415 Vac	2 Amp	
QE20	2hp, 3phase, 415vac	2000w				3.5 Amp	
QE30	3hp, 3phase, 415vac	3000w				5.5 Amp	
QE50	5hp, 3phase, 415vac	5000w				9 Amp	
QE75	7.5hp, 3phase, 415vac	7000w				12 Amp	
QE100	10hp, 3phase, 415vac	10kw				17 Amp	

# Solar Panel



Range  
10W to 310WP Mono & Poly Crystalline



Branded  
Manufactured in accordance with high standards of design & Quality Control



Positive Tolerance  
Guaranteed positive tolerance from +5% /-0 Delivers higher outputs reliably



High Model Output  
Highest conversion efficiency



Excellent Module efficiency  
Solar cell efficiency up to 18.3%  
module efficiency up to 15.6%



High performance  
Higher PV energy yields even under low light and cloudy conditions



Reliability  
Premium quality raw material and advanced manufacturing processes guarantees the reliability of our modules



EL Tested (ELECTRO LUMINESCENCE)  
Fully conforms to certification and regulatory standards

Model	QE-50W	QE-70W	QE-100W	QE-150W	QE-200W	QE-250W	QE-300
Maximum power Pm (W)	50	70	100	150	200	250	300
Open-circuit voltage (Voc)	21.50	21.5	21.5	21.5	36	36	44.64
Short-circuit current (Isc)	2.70	4.23	6.25	8.68	7.21	8.90	8.90
Voltage at max. power (Vmax)	18.40	18.2	18.2	18.4	30	30	37.44
Current at max. power (Imax)	2.94	3.88	5.8	8.23	6.66	8.33	8.10
Solar Cells Per Module(Units)	36	36	36	36	60	60	72
LengthxWidthxThickness in mm	575x675x35	866x676x30	1130x666x30	1481x666x30	1416x991x42	1646x991x42	1956x991x42
Net Weight -KG	6	8	10	13	16	19	23
Junction Box	IP 65						
Glass Type	Low Iron, Tempered, 3.2 mm thickness						

- Electrical Parameters tolerance 3% except Pmpp
- All electrical parameters specified at STC : 25°C Cell temperature; 100mW/Cm irradiance; AM 1.5
- Customized Module are also available.



## QORX ENERGY SOLAR ENERGY SOLUTIONS

- CORPORAT OFFICE :  
708, Sakar 5, B/h Natraj Cenema, Ashram Road,  
Ahmedabad-380009 Gujarat, India.
- ✉ info@qorx.in
- 🌐 www.qorx.in
- ☎ +91 - 88 66 85 89 55

- MANUFACTURING UNIT :  
725/8/3, Shri Sai Estate Opp. Shivbhoomi Estate,  
Kubadthal Road, Kubadthal, Ta. Daskroi,  
Dist, Ahmedabad - 382430 Gujarat, India.

